



## Seal Water Control and Monitoring System

---



# Mechanical Sealing Systems

## Safeunit™ order form

**Safeunit™ type:**

- Type SFP
- Type SFQ
- Type SFD

**Flow:**

- 3 l/min (0,75 GPM)
- 8 l/min (2 GPM)
- 15 l/min (4 GPM)

**Pressure area:**

- 10 bar (150 psi)
- 25 bar (360 psi)

**Complete hose assembly:**

Yes

**Seal connections:**

NPT	1/8	1/4	3/8
R	1/2	Other	

**Documentation:**

- English
- German
- Swedish
- Other \_\_\_\_\_

**Mounting:**

Bracket

Stand



Packing or single Seal Flush



Type SFP



Quench Seal



Type SFQ



Double Mechanical Seal

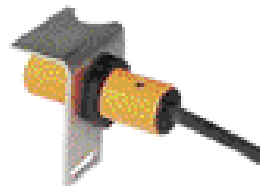


Type SFD



**Alarm:**

- AC-1 (20-250 VAC/DC)
- DC-1 (10-36 VDC)



**Europe**  
Slough, UK

Tel: 44-1753-224000  
Fax: 44-1753-224224

**Latin America**  
São Paulo, Brazil

Tel: 55-11-3371-2500  
Fax: 55-11-3371-2599

**Middle East, Africa, Asia**  
Dubai, United Arab Emirates

Tel: 971-4-3438940  
Fax: 971-4-3438970

**North America**  
Morton Grove, Illinois USA

**1-800-SEALING**  
Tel: 1-847-967-2400  
Fax: 1-847-967-3915



For your nearest John Crane facility, please contact one of the locations above.

If the products featured will be used in a potentially dangerous and/or hazardous process, your John Crane representative should be consulted prior to their selection and use. In the interest of continuous development, John Crane Companies reserve the right to alter designs and specifications without prior notice. It is dangerous to smoke while handling products made from PTFE. Old and new PTFE products must not be incinerated.

# Safematic Safeunit™

## Complete monitoring and control solution for seals and seal water systems

Installing the Safeunit™ seal water system will ensure trouble free operation of process machinery in all conditions and achieve the maximum life cycle profit of your investment.

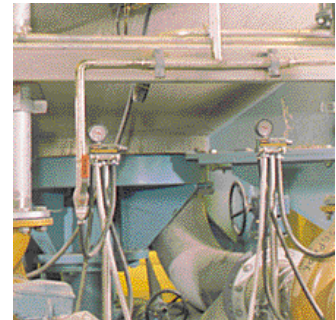
Adjusting the seal water flow and pressure with Safeunit will create the best possible operating environment for seals and maximize the runnability of the process.

### Save Seal Water

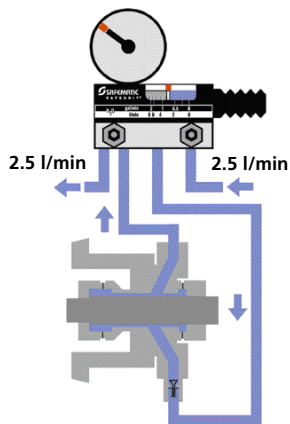
**2 drops/second = 14 m<sup>3</sup> / year**

Safeunit seal water system dramatically reduces water consumption by up to 80%. This means a considerable drop in waste water load.

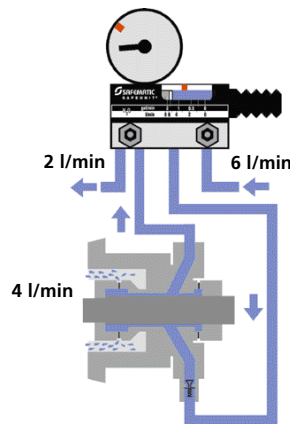
For example, with the water price of US \$0.50/m<sup>3</sup>, the annual savings in a mill with 300 pumps is US \$300,000 (flow reduction 4 l/min/pump).



#### Normal operation



#### Flow increases and pressure decreases



Changes in the pre-set system values for flow and pressure will indicate any possible problems in seals and system well in advance. For automatic control, alarm sensors can be used.

Safeunit system also detects seal water leakage in the process resulting in extra heating and evaporation costs or expensive quality problems such as dilution.

## User friendly, compact unit

- Controls and monitors seal water flow and pressure
- Predicts seal and packing failures
- Reduces and pre-determines maximum seal water consumption
- Can be cleaned with equipment running. Alarm will not go off with the new improved push-clean button
- Simplifies pump setup and service
- Detects and locates seal water line problems
- Flow indicator and pressure gauge with memory pin
- Unique non-clog valves
- Available with optional electrical alarms and LCS-leakage control system

