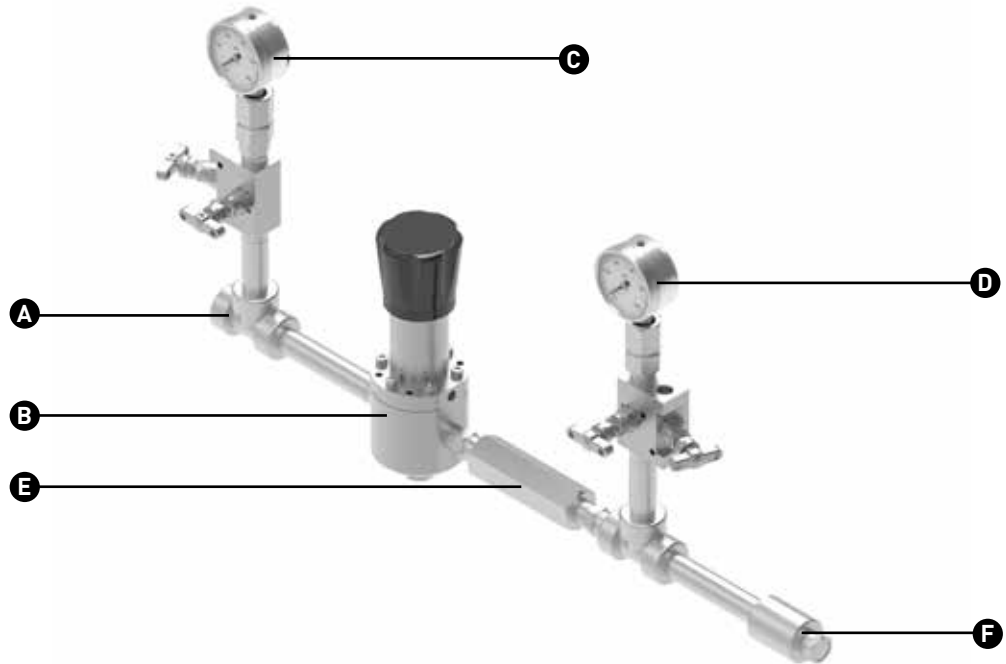


- A – Supply inlet
- B – Pressure control valve
- C – Supply pressure gauge
- D – Seal pressure gauge
- E – Check valve
- F – Seal connection



### Product Description

The GS USP-D utilizes an external source to provide clean low-pressure barrier water to an upstream pumping mechanical seal. The GS USP-D global standard system is a pre-engineered design to provide a best-practice solution to the overly complex design process between supplier and customer, significantly reducing specification and delivery timescales.

### Performance Capabilities

Temperature: Ambient: 5° to 60°C/40° to 140°F  
 Operation: 5° to 80°C/40° to 176°F

Pressure: 42 bar/610 psi (supply)  
 42 bar/610 psi (design)  
 6 bar/87 psi (operation)

Footprint: L x W x H: 150mm x 745mm x 400mm/6" x 29.5" x 16"

### Design Features

- Best practice design to deliver low-pressure barrier water for optimal mechanical seal performance and centrifugal pump up time
- Instrumentation to suit the monitoring needs of the user
- Connects directly to site water supply with no need to perform a refill action
- Lowers the water pressure from supply pressure down to the minimum required for reliable operation of the upstream pumping seal

- Safeguards against the toughest environments and provides full containment of VOCs for zero-emission control
- Streamlined design to minimize footprint and obstruction
- Design modularity and specified component flexibility
- Quick delivery with lead times to meet or exceed your needs

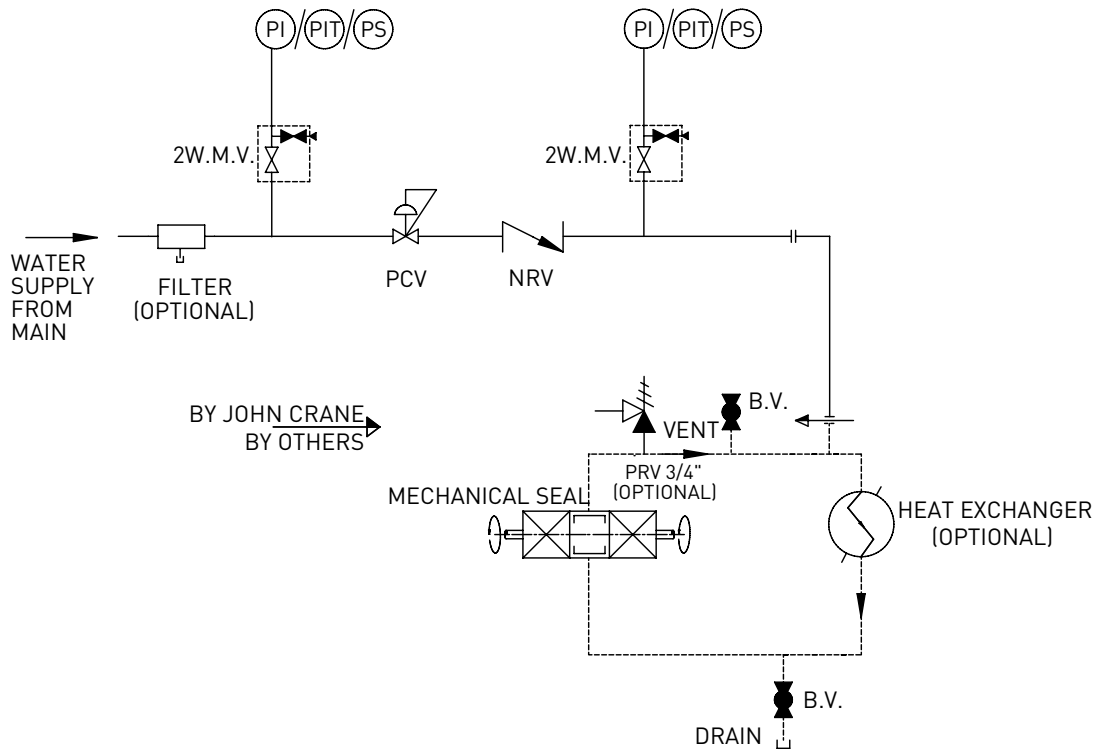
The GS USP-D global standardized seal support system is a pre-engineered design that is already certified for regional qualifications. By providing clear component description and simplified selection criteria, customers receive an improved and faster process of doing business. The GS USP-D is designed to deliver high reliability with long-term low cost of ownership.

### Materials of Construction and Component Details

Seal Components	Materials/Description
System assembly	Pipe and fittings: 316 SS
Pressure indicating transmitter	316L wetted parts 4-20mA signal, HART protocol or Foundation Fieldbus Rated for explosive atmosphere zones*
Filter	316 SS
Check valve	316/L SS
Pressure-reducing valve	316 SS

\*Region specific

### GS USP-D Typical Arrangement



### Options

Standard Component	Alternate Option
Pressure gauges	Pressure switch Pressure indicating transmitter
No filtration as standard	25µm filter 10µm filter
No pressure relief as standard	Pressure relief valve
No stand	Mounting stand
No heat exchanger	External heat exchanger (air or water cooled)



**North America**  
United States of America  
Tel: 1-847-967-2400

**Europe**  
United Kingdom  
Tel: 44-1753-224000

**Latin America**  
Brazil  
Tel: 55-11-3371-2500

**Middle East & Africa**  
United Arab Emirates  
Tel: 971-481-27800

**Asia Pacific**  
Singapore  
Tel: 65-6518-1800

If the products featured will be used in a potentially dangerous and/or hazardous process, your John Crane representative should be consulted prior to their selection and use. In the interest of continuous development, John Crane Companies reserve the right to alter designs and specifications without prior notice. It is dangerous to smoke while handling products made from PTFE. Old and new PTFE products must not be incinerated. ISO 9001 and ISO14001 Certified, details available on request.