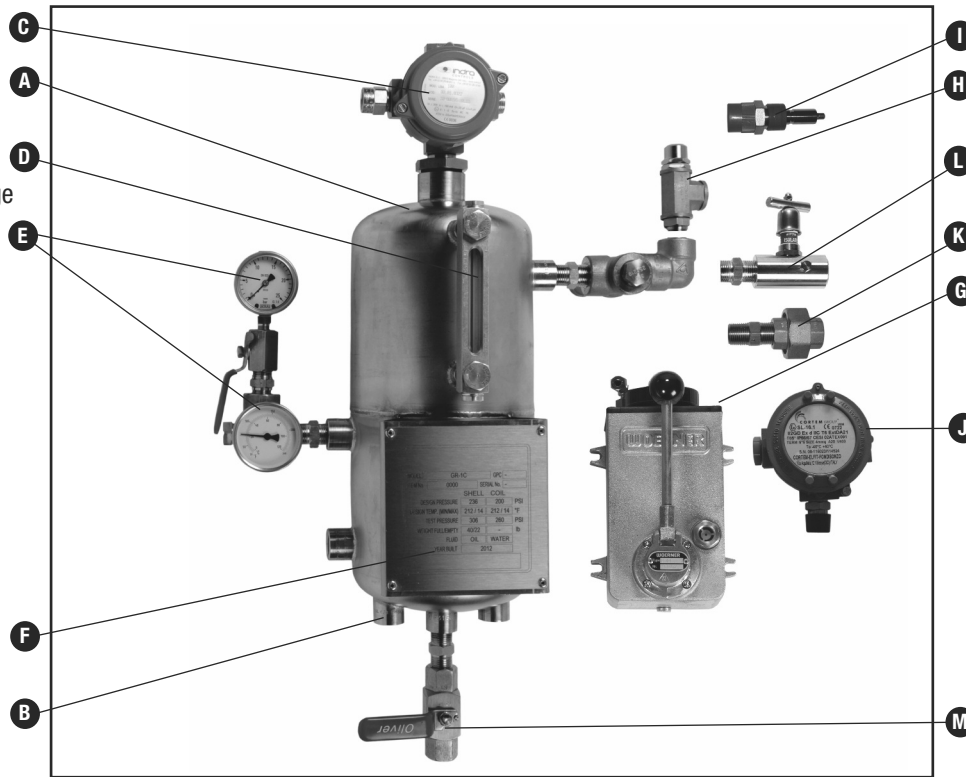


- A – Reservoir
- B – Internal Cooling Coil (GR-1C)
- C – Level Switch
- D – Offset Level Gauge
- E – Pressure/Temperature Gauge Assembly
- F – Name Plate
- G – Hand Pump
- H – Safety Relief Valve
- I – Quick Connector
- J – Pressure Switch
- K – Orifice Union
- L – Nitrogen Isolation Valve
- M – Drain Valve

**Non Stocked Options**

- Fin Tube Air Cooler (not shown)
- Support Stand (not shown)
- Circulation Pump (not shown)
- 3in1 Wireless Monitoring Device (not shown)



NOTE: Hand pump and pressure switch are panel mounted. Panel is not shown. Instrument mounting varies depending on the option selected.

### Design Features/Benefits

These general industry reservoirs provide buffer/barrier fluid to a dual seal arrangement. Key features:

- 316/L stainless steel pressure reservoir without internal cooling coil (GR-1) or with internal cooling coil (GR-1C)
- Design pressure: 16.3 bar g (236 psig), @100°C (212°F)
- Minimum design temperature: -10°C (14°F)
- Sight level gauge
- 1/2" NPT reservoir terminations
- Reservoir Capacity: 8 litre (2.2 US gallons) nominal
- CE mark in accordance with Pressure Equipment Directive (PED) 97/23/CE provided to countries within the European Community
- Welding in accordance with ASME VIII (welders qualified to ASME IX)
- Many options available including:
  - Nitrogen isolation valve (for pressurized seals)
  - Orifice union (for unpressurized seals)

### Option Variants

- Pressure gauge ranges
- Compatibility with variable barrier/buffer fluid types
- Electrical instruments suitable for:
  - Eexi circuits or Eexd (ATEX)
  - Explosion proof (UL/CSA)

### Materials of Construction

- Reservoir: 316/L stainless steel
- Level gauge: aluminium body, buna O-ring
- Tube and fittings: 316/L stainless steel
- Cooling coil: 316/L stainless steel (GR-1C only)

### Applications

- Automotive
- Chemical processing
- Power generation
- Pharmaceutical
- Pulp and paper
- Water treatment

# GR-1/1C

## RESERVOIRS

### Option Codes

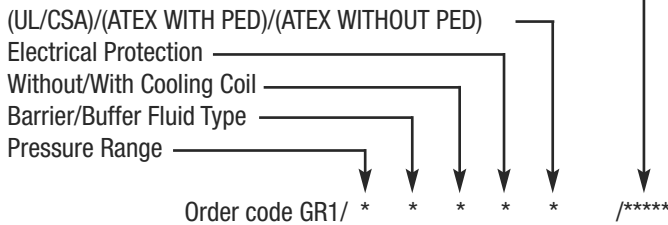
PRESSURE RANGE			
Working Pressure	Pressure Gauge Range	Pressure Switch Range	Code
0-6 bar g (0-100 psig)	0-10 bar g (0-150 psig)	0-6 bar g (0-100 psig)	A
6-16.3 bar g (100-236 psig) max	0-25 bar g (0-360 psig)	6-20 bar g (100-300 psig)	B

BARRIER/BUFFER FLUID TYPE		COOLING COIL	
	Code		Code
Mineral Oil – Max viscosity 20cst	M	Without Cooling Coil	N
Water – Water/Glycol & Ethylene/Glycol	W	With Cooling Coil	C
Barrier/Buffer Fluid to be specified	X		

ELECTRICAL ENVIRONMENT TYPE			
Electrical Protection	Code	Electrical Certification	Code
Explosion Proof – switches Eexd, circulating pump Eexe	F	UL/CSA	U
Eexi – for intrinsically safe circuits (ATEX only)	I	ATEX WITH PED	A
Not Applicable – no electrical equipment on system	N	ATEX WITHOUT PED	S

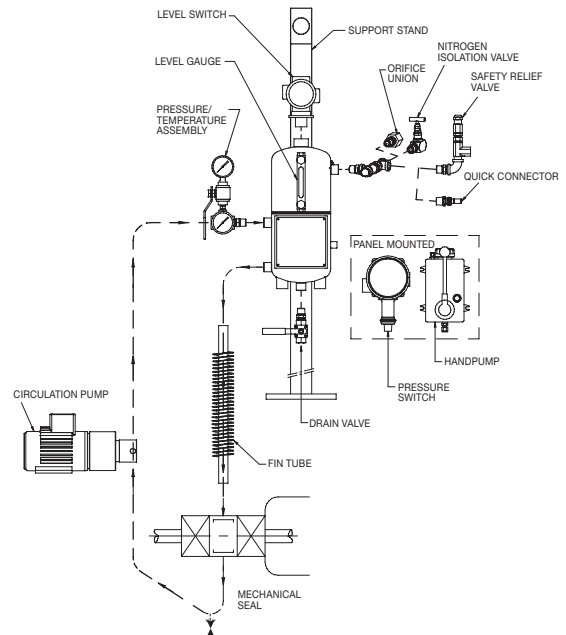
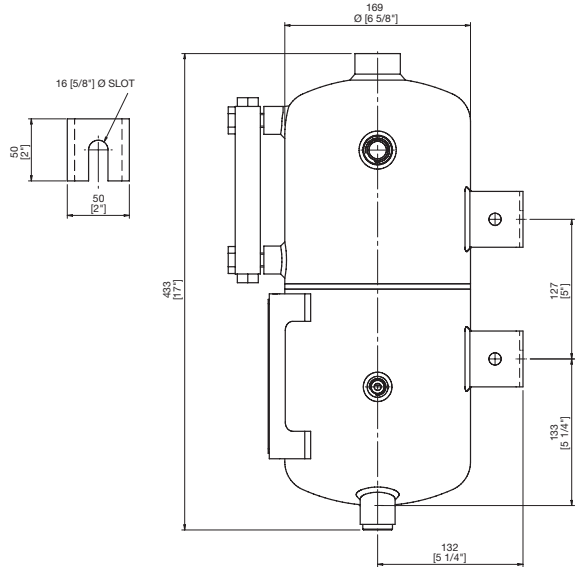
EQUIPMENT OPTIONS	
Level gauge and pressure gauge (with brass parts) included. For pressure gauge with stainless steel parts, select option ***32	
Pressure/Temperature Gauge Instrument Assembly	****1
Hand Pump Refilling Unit	****2
Low Level Switch	****4
Safety Relief Valve – 11-25 bar g (165-300 psig)	****8
Circulation Pump (non stocked option)	***16
Pressure Gauge – Range follows pressure range selection	***32
Fin Tube Air Cooler (non stocked option)	***64
Support Stand (non stocked option)	**128
Nitrogen Isolating Valve (pressurized seals)	**256
Orifice Union (unpressurized seals)	**512
Pressure Switch	*1024
Quick Connector	*2048
Drain Valve	*4096
3in1 Wireless Pressure/Temperature/Level Device (non stocked option)	*8192
See Note 3	

To specify equipment options add together each component code for the items to give a total figure. The total preceded by any spare spaces making up the 5 digits, should be inserted in the options section of the order code eg. /1168



### GR-1 Series Typical Arrangement

NOTE: Instrument mounting is indicative only and may vary depending on the options selected



NOTES

1. Electrical connection is M20 (ATEX) or 3/4" NPT(UL/CSA)
2. Barrier/buffer fluid supply and return connections will be shipped with plastic plugs. All other connections will have metallic plugs
3. 3in1 initial installation requires installation of wireless network



**North America**  
United States of America  
Tel: 1-847-967-2400  
Fax: 1-847-967-3915

**Europe**  
United Kingdom  
Tel: 44-1753-224000  
Fax: 44-1753-224224

**Latin America**  
Brazil  
Tel: 55-11-3371-2500  
Fax: 55-11-3371-2599

**Middle East & Africa**  
United Arab Emirates  
Tel: 971-481-27800  
Fax: 971-488-62830

**Asia Pacific**  
Singapore  
Tel: 65-6518-1800  
Fax: 65-6518-1803

If the products featured will be used in a potentially dangerous and/or hazardous process, your John Crane representative should be consulted prior to their selection and use. In the interest of continuous development, John Crane Companies reserve the right to alter designs and specifications without prior notice. It is dangerous to smoke while handling products made from PTFE. Old and new PTFE products must not be incinerated. ISO 9001 and ISO14001 Certified, details available on request.