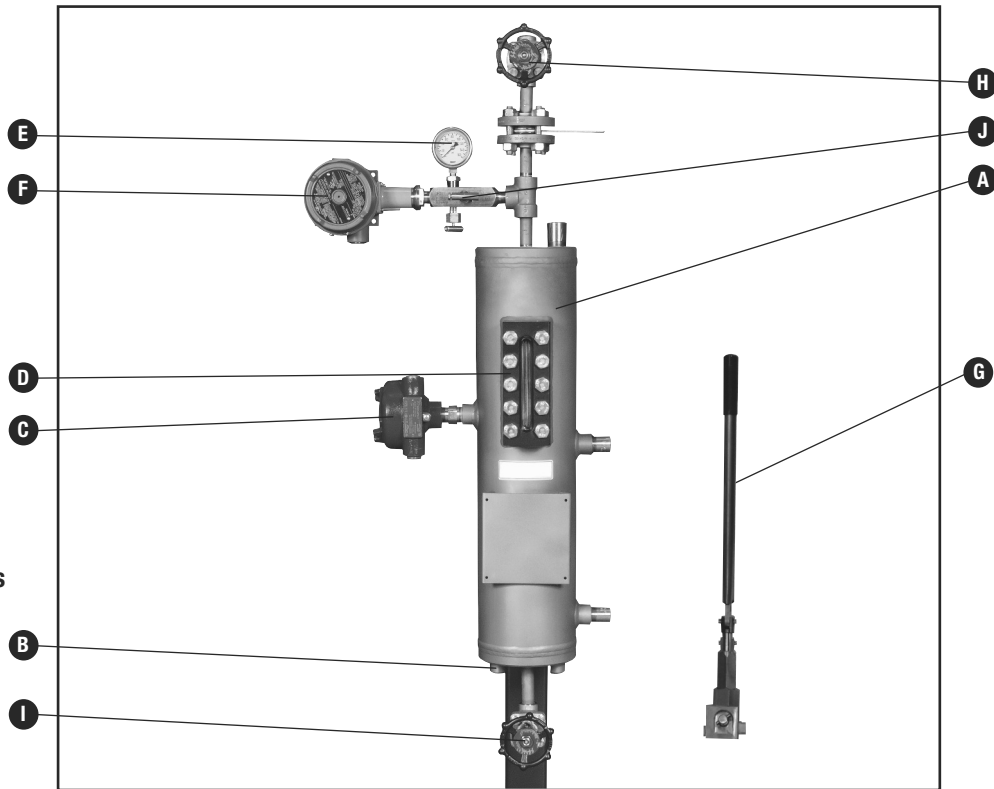


- A – Reservoir
- B – Internal Cooling Coil (GR-3C)
- C – Level Switch
- D – Weld Pad
- E – Pressure Gauge
- F – Pressure Switch
- G – Hand Pump (supplied loose)
- H – Vent Valve
- I – Drain Valve
- J – Block and Bleed Valve

### Non Stocked Options

- Fin Tube Air Cooler (not shown)
- Support Stand (not shown)



### Design Features/Benefits

These general industry reservoirs provide buffer/barrier fluid to a dual seal arrangement. Key features:

- Pressure reservoir with flat heads, without internal cooling coil (GR-3), with internal cooling coil (GR-3C)
- 316/L stainless steel: 73 bar g (1055 psig), @100°C (212°F)
- Carbon steel: 62 bar g (902 psig), @100°C (212°F)
- Minimum design temperature: -29°C (-20°F)
- 1/2" NPT reservoir terminations
- CE mark in accordance with Pressure Equipment Directive (PED) 97/23/CE provided to countries within the European Community
- Welding in accordance with ASME VIII (welders qualified to ASME IX)

### Applications

- Automotive
- Chemical processing
- Petrochemical
- Power generation
- Pharmaceutical
- Pulp and paper
- Water treatment

### Option Variants

- Carbon steel or 316/L stainless steel reservoir
- ASME U or UM Stamp
- Pressure gauge ranges
- Pressure switch ranges
- Compatibility with variable barrier/buffer fluid types
- Electrical instruments suitable for:
  - Eexi circuits or Eexd (ATEX)
  - Explosion proof (UL/CSA)
- Reservoir capacity 11.3 liters (3 US gallons) or 18.9 litres (5 US gallons)

### Materials of Construction

- Reservoir: carbon steel or 316/L stainless steel
- Level gauge: carbon steel cover, carbon steel or 316/L stainless steel wetted parts depending on reservoir material wetted parts
- Tube and fittings: 316/L stainless steel
- Cooling coil (GR-3C only): 316/L stainless steel

### Option Codes

PRESSURE RANGE		
Pressure Gauge Range	Pressure Switch Range	Code
<b>Working Pressure 0-2 bar g/0-30 psig</b>		
0-10 bar g/0-150 psig	0.3-2 bar g/5-30 psig	A
<b>Working Pressure 2-6 bar g/30-100 psig</b>		
0-10 bar g/0-150 psig	0.7-6.9 bar g/10-100 psig	B
<b>Working Pressure 6-14 bar g/100-200 psig</b>		
0-25 bar g/0-360 psig	1.4-14 bar g/20-200 psig	C
<b>Working Pressure 14-30 bar g/200-435 psig</b>		
0-40 bar g/0-600 psig	3.8-34.5 bar g/55-500 psig	D

BARRIER/BUFFER FLUID TYPE	Code
Mineral Oil – Max viscosity 20cst	M
Water – Water/Glycol & Ethylene/Glycol	W
Barrier/Buffer Fluid to be specified	X

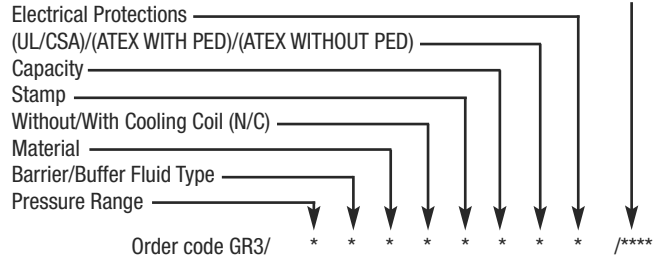
RESERVOIR			
Material	Code	COOLING COIL	Code
Carbon Steel	C	Without Cooling Coil	N
Stainless Steel	S	With Cooling Coil	C
Stamp	Code	Capacity	Code
No Stamp	N	11.3 litre (3 US Gallon)	3
U Stamp	U	18.9 litre (5 US Gallon)	5
UM Stamp (available for certification code U only)	M		

ELECTRICAL ENVIRONMENT TYPE			
Certification	Code	Electric Protections	Code
UL/CSA	U	Explosion proof, (UL/CSA) – 240 VAC	X
		Explosion proof, (UL/CSA) – 120 VAC	I
		Explosion proof, (UL/CSA) – 24 VDC	H
ATEX, plus PED for Reservoir	A	Eexd (ATEX) – 240 VAC	X
		Eexd (ATEX) – 24 VDC	H
		Eexi (ATEX) 24 VDC	G
ATEX, no PED for Reservoir	S	Eexd (ATEX) – 240 VAC	X
		Eexd (ATEX) – 24 VDC	H
		Eexi (ATEX) 24 VDC	G

### Option Codes

EQUIPMENT OPTIONS	
Level Gauge (included)	
Handpump Refilling Unit	***1
Low Level Switch	***2
Pressure Gauge with Block and Bleed Valve	***4
Pressure Switch with Block and Bleed Valve	***8
Pressure Gauge and Pressure Switch with common Block and Bleed Valve	**16
Drain valve	**32
Vent Valve	**64
Fin Tube Air Cooler (supplied loose) - (non stocked option)	*128
Support Stand (non stocked option)	*256
Orifice Union	*512
Orifice Plate	1024
Pressurization Line	2048

To specify equipment options add together each component code for the items to give a total figure. The total preceded by any spare spaces making up the 4 digits, should be inserted in the options section of the order code e.g. /\*131.



### NOTES

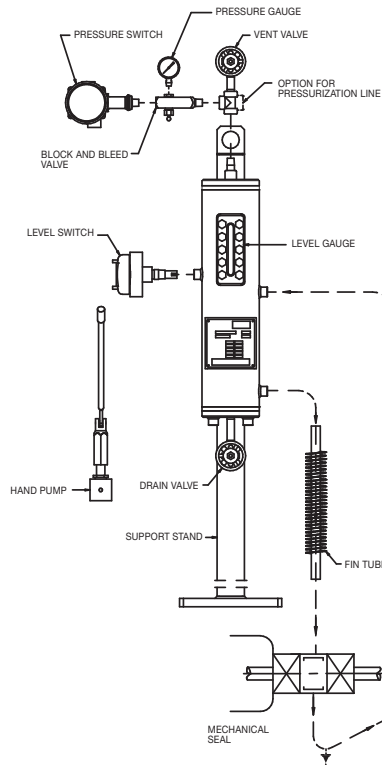
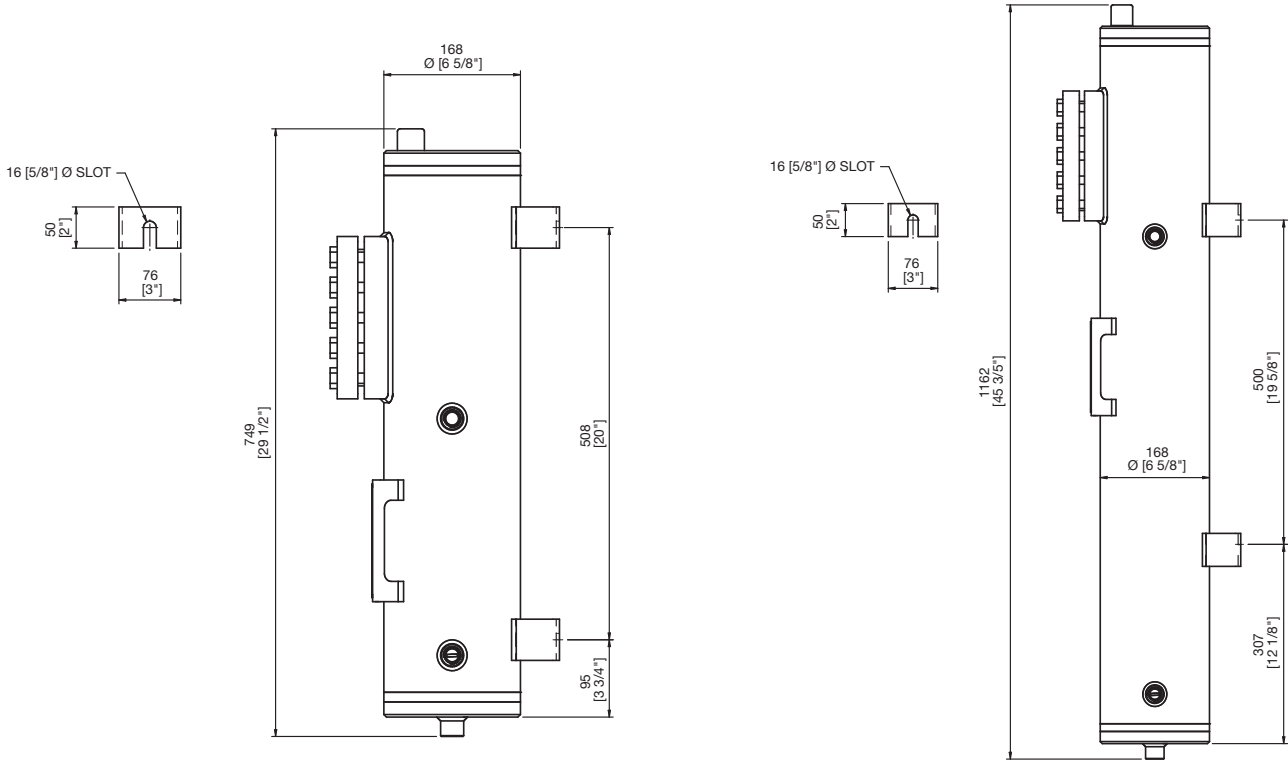
- 1 Electrical connection is M20 (ATEX) or, 3/4" NPT (UL/CSA)
- 2 Barrier/buffer fluid supply and return connections will be shipped with plastic plugs, all other connections will have metallic plugs

# GR-3/3C

## RESERVOIRS

### GR3 Series Typical Arrangement

NOTE: Instrument mounting is indicative only and may vary depending on the options selected



# GR-3/3C

## RESERVOIRS



**North America**  
United States of America  
Tel: 1-847-967-2400  
Fax: 1-847-967-3915

**Europe**  
United Kingdom  
Tel: 44-1753-224000  
Fax: 44-1753-224224

**Latin America**  
Brazil  
Tel: 55-11-3371-2500  
Fax: 55-11-3371-2599

**Middle East & Africa**  
United Arab Emirates  
Tel: 971-481-27800  
Fax: 971-488-62830

**Asia Pacific**  
Singapore  
Tel: 65-6518-1800  
Fax: 65-6518-1803

If the products featured will be used in a potentially dangerous and/or hazardous process, your John Crane representative should be consulted prior to their selection and use. In the interest of continuous development, John Crane Companies reserve the right to alter designs and specifications without prior notice. It is dangerous to smoke while handling products made from PTFE. Old and new PTFE products must not be incinerated. ISO 9001 and ISO14001 Certified, details available on request.